

(CONT.)

79.96	0.4900	0.6435	-0.05	-0.0033	0.05	-0.0123	0.19	-0.0169	-0.00	-0.0072	0.04	-0.0109
79.89	0.5000	0.6475	-0.06	-0.0029	0.05	-0.0124	0.20	-0.0170	-0.00	-0.0073	0.04	-0.0109
79.84	0.5100	0.6520	-0.05	-0.0021	0.07	-0.0119	0.22	-0.0166	0.02	-0.0069	0.07	-0.0105
79.77	0.5200	0.6565	-0.06	-0.0013	0.07	-0.0115	0.23	-0.0163	0.02	-0.0066	0.07	-0.0102
79.75	0.5300	0.6610	-0.02	-0.0007	0.12	-0.0112	0.28	-0.0160	0.07	-0.0064	0.11	-0.0099
79.71	0.5400	0.6660	-0.01	0.0003	0.15	-0.0104	0.32	-0.0153	0.09	-0.0057	0.14	-0.0092
79.65	0.5500	0.6710	-0.01	0.0012	0.16	-0.0098	0.33	-0.0146	0.10	-0.0051	0.15	-0.0086
79.60	0.5600	0.6760	-0.00	0.0020	0.17	-0.0092	0.35	-0.0139	0.11	-0.0046	0.17	-0.0080
79.55	0.5700	0.6810	0.00	0.0027	0.19	-0.0087	0.36	-0.0133	0.13	-0.0042	0.18	-0.0076
79.50	0.5800	0.6865	0.01	0.0036	0.20	-0.0077	0.38	-0.0123	0.14	-0.0034	0.19	-0.0067
79.44	0.5900	0.6920	-0.00	0.0046	0.20	-0.0069	0.38	-0.0113	0.14	-0.0027	0.20	-0.0059
79.40	0.6000	0.6980	0.01	0.0058	0.22	-0.0056	0.41	-0.0099	0.16	-0.0016	0.22	-0.0046
79.35	0.6100	0.7030	0.01	0.0059	0.23	-0.0054	0.42	-0.0096	0.17	-0.0015	0.23	-0.0045
79.30	0.6200	0.7090	0.01	0.0069	0.24	-0.0043	0.43	-0.0084	0.18	-0.0006	0.23	-0.0035
79.27	0.6300	0.7145	0.03	0.0073	0.26	-0.0038	0.45	-0.0076	0.20	-0.0003	0.26	-0.0030
79.20	0.6400	0.7200	0.01	0.0074	0.25	-0.0034	0.44	-0.0070	0.19	-0.0001	0.25	-0.0027
79.15	0.6500	0.7255	0.01	0.0075	0.25	-0.0031	0.45	-0.0065	0.19	0.0000	0.25	-0.0024
79.10	0.6600	0.7310	0.01	0.0073	0.25	-0.0030	0.45	-0.0060	0.19	0.0001	0.25	-0.0023
79.05	0.6700	0.7365	0.00	0.0071	0.25	-0.0029	0.45	-0.0057	0.19	-0.0000	0.25	-0.0022
79.00	0.6800	0.7420	-0.01	0.0067	0.25	-0.0029	0.45	-0.0054	0.19	-0.0003	0.25	-0.0023
78.95	0.6900	0.7475	-0.01	0.0061	0.25	-0.0031	0.45	-0.0053	0.19	-0.0006	0.25	-0.0025
78.89	0.7000	0.7530	-0.03	0.0053	0.23	-0.0033	0.43	-0.0052	0.17	-0.0011	0.23	-0.0028
78.86	0.7100	0.7590	-0.02	0.0049	0.25	-0.0032	0.45	-0.0048	0.19	-0.0012	0.25	-0.0027
78.80	0.7200	0.7650	-0.05	0.0044	0.23	-0.0031	0.43	-0.0045	0.17	-0.0013	0.23	-0.0027
78.76	0.7300	0.7710	-0.05	0.0037	0.23	-0.0033	0.43	-0.0045	0.17	-0.0017	0.23	-0.0028
78.71	0.7400	0.7770	-0.06	0.0028	0.22	-0.0035	0.41	-0.0041	0.15	-0.0021	0.22	-0.0031
78.66	0.7500	0.7830	-0.08	0.0017	0.22	-0.0039	0.40	-0.0042	0.14	-0.0027	0.20	-0.0035
78.60	0.7600	0.7890	-0.11	0.0005	0.18	-0.0044	0.37	-0.0044	0.11	-0.0034	0.18	-0.0040
78.57	0.7700	0.7950	-0.11	-0.0008	0.18	-0.0050	0.37	-0.0046	0.12	-0.0042	0.18	-0.0048
78.53	0.7800	0.8015	-0.12	-0.0019	0.17	-0.0053	0.36	-0.0046	0.11	-0.0047	0.17	-0.0050
78.50	0.7900	0.8080	-0.12	-0.0031	0.17	-0.0057	0.36	-0.0047	0.11	-0.0054	0.17	-0.0055
78.47	0.8000	0.8155	-0.13	-0.0034	0.17	-0.0053	0.35	-0.0039	0.11	-0.0051	0.17	-0.0051
78.44	0.8100	0.8225	-0.13	-0.0044	0.16	-0.0055	0.35	-0.0038	0.10	-0.0055	0.16	-0.0054
78.40	0.8200	0.8300	-0.15	-0.0051	0.14	-0.0054	0.33	-0.0035	0.08	-0.0055	0.14	-0.0053
78.37	0.8300	0.8385	-0.16	-0.0048	0.13	-0.0044	0.31	-0.0022	0.07	-0.0047	0.13	-0.0043
78.34	0.8400	0.8470	-0.17	-0.0048	0.12	-0.0036	0.29	-0.0011	0.06	-0.0041	0.12	-0.0035
78.31	0.8500	0.8560	-0.18	-0.0043	0.11	-0.0025	0.28	0.0002	0.05	-0.0030	0.10	-0.0024
78.28	0.8600	0.8645	-0.19	-0.0045	0.09	-0.0020	0.25	0.0009	0.03	-0.0027	0.09	-0.0020
78.24	0.8700	0.8730	-0.21	-0.0049	0.06	-0.0018	0.22	0.0014	0.00	-0.0026	0.06	-0.0017
78.21	0.8800	0.8806	-0.23	-0.0062	0.04	-0.0026	0.19	0.0007	-0.02	-0.0035	0.03	-0.0025
78.18	0.8900	0.8905	-0.24	-0.0054	0.01	-0.0012	0.16	0.0021	-0.04	-0.0022	0.01	-0.0012
78.20	0.9000	0.8990	-0.21	-0.0060	0.03	-0.0015	0.17	0.0019	-0.01	-0.0025	0.03	-0.0015
78.25	0.9100	0.9075	-0.14	-0.0067	0.08	-0.0019	0.21	0.0014	0.04	-0.0031	0.08	-0.0020
78.30	0.9190	0.9158	-0.08	-0.0068	0.13	-0.0019	0.25	0.0014	0.09	-0.0030	0.13	-0.0019
MEAN DEVIATION:			0.20	0.0074	0.25	0.0061	0.39	0.0067	0.19	0.0049	0.24	0.0053
MAX. DEVIATION:			0.91	0.0194	0.85	0.0138	0.89	0.0170	0.80	0.0113	0.83	0.0120

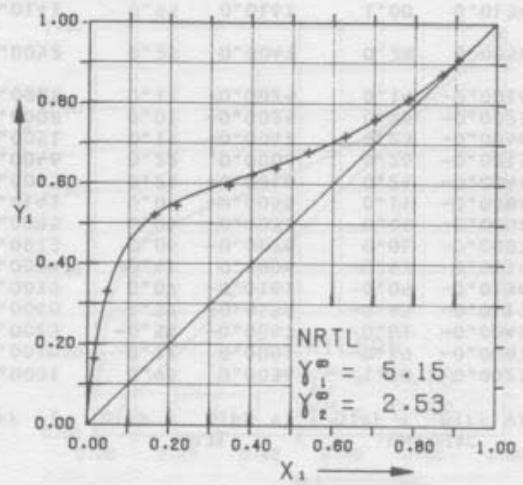
(1) ETHANOL C₂H₆O
 (2) WATER H₂O

++++ ANTOINE CONSTANTS REGION +++
 (1) 8.11220 1592.864 226.184 20- 93 C METHOD 1 +
 (2) 8.07131 1730.630 233.426 1- 100 C METHOD 2 +

PRESSURE= 380.00 MM HG (0.507 BAR)

LIT: STABNIKOV V.N., PROTSYUK T.B., YUSHENKO M.
 IZV. VYSSH. UCHE. ZAVED., PISHCH. TEKHNOL. 149 (1972).

CONSTANTS: A12 A21 ALPHA12
 MARGULES 1.6172 0.8344
 VAN LAAR 1.6724 0.9433
 WILSON 290.3395 913.0111
 NRTL -99.1342 1259.4814 0.2987
 UNIQUAC 50.9422 220.6280



EXPERIMENTAL DATA			MARGULES		VAN LAAR		WILSON		NRTL		UNIQUAC	
T DEG C	X1	Y1	DIFF T	DIFF Y1	DIFF T	DIFF Y1	DIFF T	DIFF Y1	DIFF T	DIFF Y1	DIFF T	DIFF Y1
78.00	0.0180	0.1634	0.24	0.0003	0.39	-0.0048	0.44	-0.0065	0.33	-0.0029	0.39	-0.0048
73.00	0.0485	0.3302	-0.39	0.0088	-0.28	0.0065	-0.33	0.0091	-0.26	0.0058	-0.26	0.0061
67.10	0.1635	0.5215	0.32	-0.0064	0.01	0.0025	-0.33	0.0128	0.14	0.0011	0.02	0.0035
66.00	0.2176	0.5451	0.38	-0.0183	0.03	-0.0091	-0.27	-0.0004	0.13	-0.0091	0.02	-0.0076
64.40	0.3454	0.5949	0.17	-0.0164	-0.05	-0.0132	-0.17	-0.0111	-0.02	-0.0103	-0.06	-0.0114
63.65	0.4014	0.6225	-0.19	-0.0052	-0.33	-0.0056	-0.38	-0.0062	-0.32	-0.0021	-0.34	-0.0040
63.25	0.4597	0.6391	-0.24	-0.0064	-0.30	-0.0104	-0.29	-0.0130	-0.30	-0.0065	-0.31	-0.0090
62.75	0.5400	0.6792	-0.29	0.0055	-0.26	-0.0023	-0.21	-0.0063	-0.28	0.0016	-0.27	-0.0012
62.40	0.6300	0.7195	-0.19	0.0059	-0.10	-0.0034	-0.01	-0.0072	-0.12	-0.0002	-0.10	-0.0026
62.08	0.7031	0.7617	-0.21	0.0076	-0.08	-0.0004	0.03	-0.0030	-0.10	0.0017	-0.07	0.0001
61.90	0.7845	0.8120	-0.12	0.0028	0.04	-0.0012	0.14	-0.0016	0.01	-0.0003	0.04	-0.0010
61.60	0.8661	0.8730	-0.25	-0.0018	-0.09	-0.0009	0.00	0.0007	-0.12	-0.0011	-0.09	-0.0008
61.55	0.9071	0.9103	-0.25	-0.0011	-0.11	0.0016	-0.03	0.0037	-0.13	0.0012	-0.11	0.0017
MEAN DEVIATION:			0.25	0.0066	0.16	0.0048	0.20	0.0063	0.17	0.0034	0.16	0.0041
MAX. DEVIATION:			0.39	0.0183	0.39	0.0132	0.44	0.0130	0.33	0.0103	0.39	0.0114

J. Gmehling

U. Onken

VAPOR-LIQUID EQUILIBRIUM DATA COLLECTION

Aqueous-Organic Systems

Tables and diagrams of data for binary and
multicomponent mixtures up to moderate pressures.
Constants of correlation equations for computer use.

J. Gmehling, U. Onken



Chemistry Data Series

Vol. I, Part 1

Published by DECHEMA

Deutsche Gesellschaft für Chemisches Apparatewesen

Editors: Dieter Behrens, Reiner Eckermann

Vapor-Liquid Equilibrium Data Collection

1

Tables and diagrams of data for binary and
multicomponent mixtures up to moderate pressures.
Constants of correlation equations for computer use.

J. Gmehling, U. Onken

Lehrstuhl Technische Chemie B
(Prof. Dr. U. Onken)
Universität Dortmund

© DECHEMA Deutsche Gesellschaft für Chemisches Apparatewesen
6000 Frankfurt/Main, W. Germany

First Printing 1977

ISBN 3-921567-01-7

All rights reserved

No part of this work may be reproduced or used in any form or by any means — graphic, electronic, or mechanical, including photocopying, recording, or taping, or information storage and retrieval systems — without written permission of the publishers.

Typesetting by H. Prinz, Frankfurt

Printed in W. Germany by Verlag + Druckerei Friedrich Bischoff, Frankfurt